

ZENITH

Backup & Disaster Recovery Solution

From Zenith Infotech



Infotech Ltd



Backup & Disaster Recovery Platform

Zenith Infotech's BDR Platform is a comprehensive disk-based solution for business continuity needs in the SMB Marketplace. The Zenith BDR offers you a white labeled solution and delivers all the power and flexibility you need to take your business to new levels of customer satisfaction and enhanced profitability through one easy to use appliance.

Increase sales by replacing traditional tape backup solutions and provide your clients with a comprehensive Business Continuity package, at unmatched price points. Recover from system or data loss in minutes, not hours or days.

Zenith's BDR models are Network Attached Storage (NAS) device installed with Business Continuity Software (BCS) that run on the Windows Storage Server 2003 platform. With near real-time backups as often as every 15 minutes, your downtime is minimized.

Zenith supports Windows Servers including 32 bit and 64 bit OS. With 80% of SMB's having Windows based servers you have a large pool of clients whom you can cater to. Zenith's BDR solution will set you apart from the competition, get you more sales closures, reduce overheads, and increase profits while ensuring your customer satisfaction.

Network Attached Storage (NAS) Models

Models	BDR 100t/ts	BDR 1000t/ts	BDR 200t/ts	BDR 2100t/ts	BDR 2100r/rs	BDR3100r/rs
Form Factor	Tower	Tower	Tower	Tower	2U Rackmount	2U Rackmount
CPU	Athlon DualCore	Opteron DualCore	Opteron DualCore	Opteron DualCore	Opteron DualCore	2xDual Core AMD Opteron
RAID	No	RAID1	No	RAID1	RAID1	RAID5
Data Volume Capacity	400GB (500GBx1)	400GB (500GBx2)	1TB (1TBx1)	1TB (1TBx2) RAID1	1TB (1TBx2) RAID1	2.7TB (4x1TB) RAID5
System Capacity	Same as Data Volume	Same as Data Volume	250GB Separate Drive	250GB (250GBx2) RAID1	250GB (250GBx2) RAID1	250GB (250GBx2) RAID1
Servers*	2	2	6	6	6	10
Memory	4GB	8GB	8GB	8GB	8GB	16GB
Gigabit Network Interface Cards	1	2	2	2	2	2
Virtual Machine Acceleration	No	No	Yes	Yes	Yes	Yes

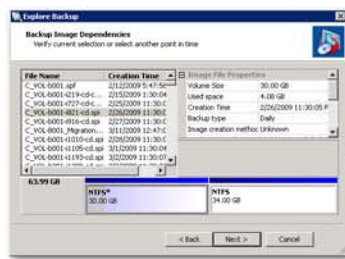
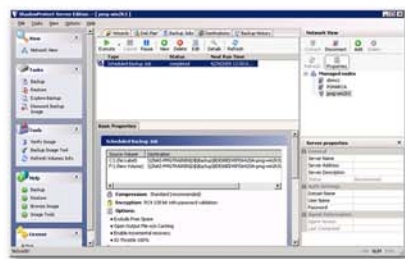


Backup & Recovery

Backup & Recovery

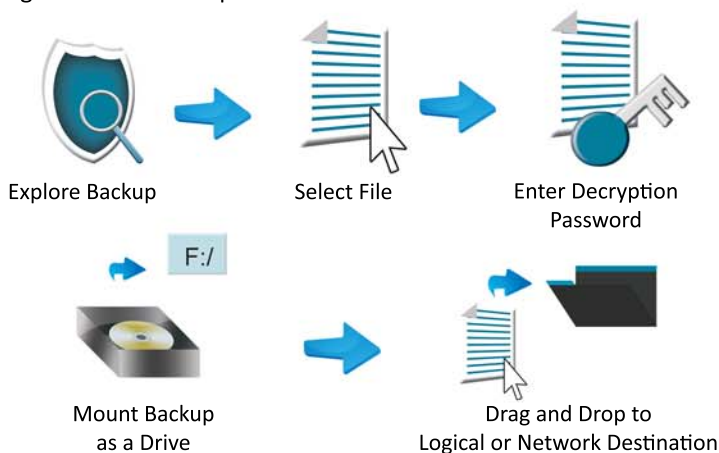
What would a Backup & Disaster Recovery solution be without solid backups? Zenith's disk based appliance allows for fast point-in-time snapshots that won't impact your environment. Only changes to the data are captured. Restoration is just as easy, mount your backup file as a drive and copy what you need locally or to the network.

After the initial base backup, all future backups are incrementals. Backups are taken at the block level. This is below the file and folder level, and is more efficient. An incremental chain is created and only the changes are backed up, reducing backup windows.



Application Recovery

BRecover applications and databases without additional agents including SQL, Sharepoint, and Active Directory. Just connect to one of your point-in-time snapshots, find your database and transaction log files, and restore using drag and drop functionality. Our solution allows for easy document recovery of Sharepoint files through windows file explorer.



Features

- 15 Minute Snapshots
- 256-bit AES Encryption
- Windows Server Support For 32 and 64-bit OS's
- Disk Based Backup
- File & Folder Restores
- System Restores
- Recover Using Drag & Drop Functionality
- Exchange Message Level Recovery
- Database & Application Level Recovery
- VSS Aware
- Sync to External Drive Options
- Multiple Restore Points Locally & Offsite

Backup & Recovery





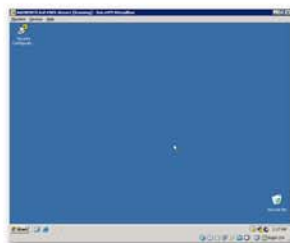
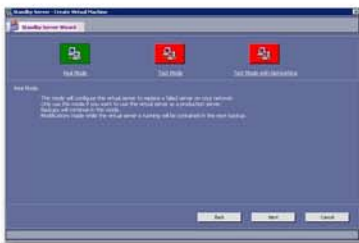
Standby Server

The BDR can be configured to function as a standby server in minutes. Eliminate costly downtime due to server failure. Failover servers directly from the backup image. There is no need to convert backup images to virtual hard disks. The virtualized server retains the server state and system settings and is completely transparent to end users. Backups continue after a server is failed over. You have the latest changes when restoring back to physical hardware.

Virtual Test Environment

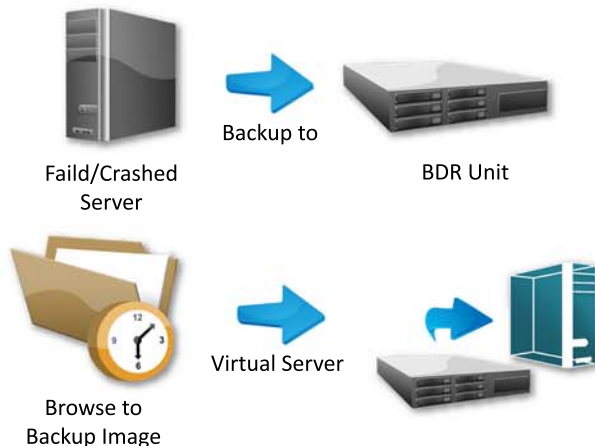
Replicate your production environment quickly and easily within your network. With the Zenith BDR have your virtual servers up in minutes.

- Patch Testing, Configuration Changes & Software Updates
- No need to maintain a separate test environment
- Test Environment is always in sync



Disaster Recovery Testing

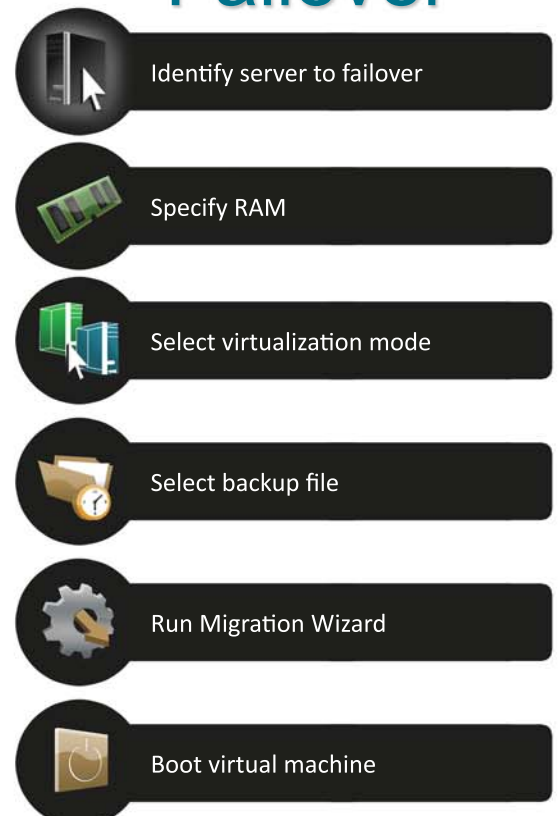
Perform disaster recovery testing by verifying backup images with the BDR. There are 3 virtualization modes, Real, Test, and Test Mode with Networking. Use test mode to verify your images, use real mode in the event of a disaster. Your system can be restored in minutes, not days. This provides built-in redundancy and allows shorter RTO's (Recovery Time Objectives).



Features

- Does Not Rely on P2V Conversion Process
- Boots directly from the backup image
- Instant Failover Process
- Runs Directly on the BDR
- Failover a Server in Less Than 30 minutes
- Hardware Independent
- Real or Test Modes
- Select a Point-In-Time Snapshot Just Before the Failure
- Server Will Have the Same Network Settings
- Backup Continue on Standby Server

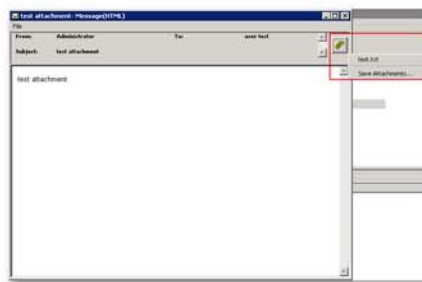
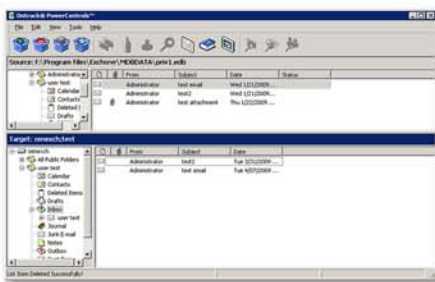
Standby Server Failover





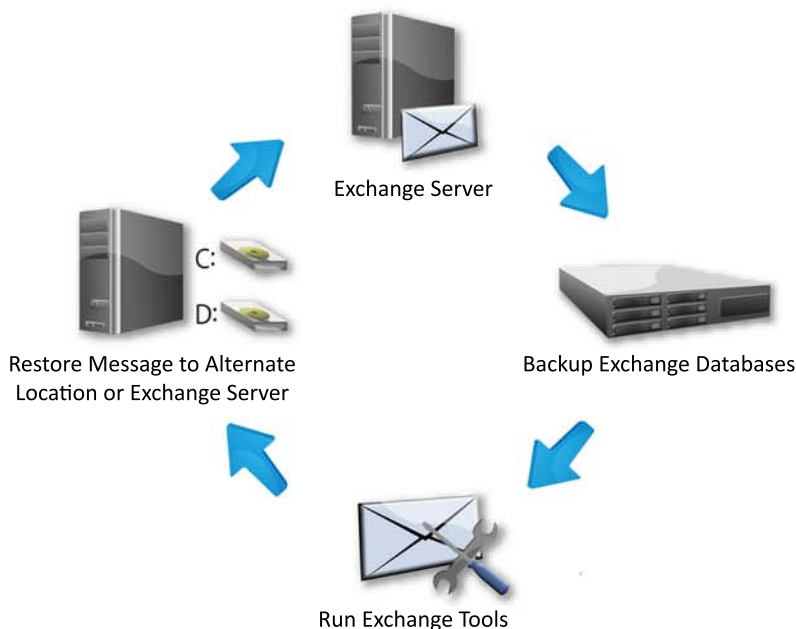
Mailbox & Message Level Recovery

Email has become the lifeblood of the business world. The Zenith BDR allows you to perform mailbox & message restorations faster than ever. With short recovery times and frequent recovery points, setbacks are fewer and employees are able to stay connected and productive, whether you're facing the failure of an Exchange server or just a mistakenly deleted email.



Exchange Migration

Perform Exchange Server migrations with the Exchange Recovery Tools by restoring all of your Exchange Mailboxes to the new mail server without ever bringing the old mail server online. Accomplish all this without time intensive message level backups. The BDR can extract this information directly from the Exchange Message Store.



Features

- Recover individual messages
- Recover Calendar Items
- Recover Mailboxes
- Recover Attachments
- Recover Public Folder Items
- Restore to .pst files
- Restore to a Running Exchange Server
- Export Messages
- Archive Search

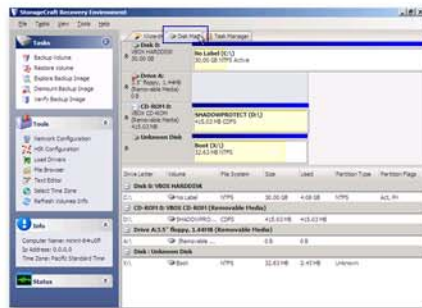
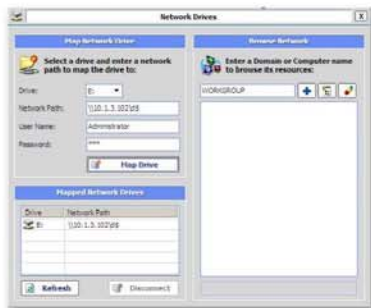
Mailbox & Message Level Recovery





Bare Metal Restore

Bare Metal Restore (BMR) gives you the ability to restore to a virtual server or dissimilar hardware configuration for ease of recovery after a disaster; e.g. hardware failure. This gives you flexibility for restorations and doesn't require the cost and effort of keeping a failover server ready at all times.



Recovery Process

The BDR's recovery process is quite simple. When the time comes to restore your server from the BDR back to new hardware a boot cd is inserted into the new physical hardware. This new server maps to the BDR device and pulls the latest backup image. Once the image is copied to the server the BDR manipulates the hardware abstraction layer and inserts the necessary device drivers for the new hardware. After the server is completely restored, backups continue to take place on their scheduled interval.



Failed Server



Backup to



BDR Unit



Virtual Machine



Restore to



Identical Hardware



Dissimilar Hardware

Features

- Virtual to Physical Restores
- Virtual to Virtual Restores
- Restore to Dissimilar Hardware
- Integrated Driver Support
- Multiple Partition Restore
- Windows Domain Controller Support

BMR Process



Boot to the BMR Recovery Environment



Map a Drive to the BDR



Install the Necessary Drivers



Restore from Backup Image



Offsite Replication

Zenith also provides features to synchronize your backups to a local or network destination. This copies your entire backup chain to a redundant location for archiving and disaster recovery. Synchronizations can be scheduled or run on demand. Administrators receive alerts on failure. Retrieve images and restore back to the BDR if needed from archive.

Offsite Storage

Zenith also offers offsite storage that provides the option of synchronizing your backups offsite to our secure co-location facilities, all through an industry standard 256-bit encrypted tunnel. Be secure in the knowledge your backups have not been compromised during transfer. If your site is destroyed, you're protected. We will ship you a replacement BDR next day air. Virtualize your servers on it until replacement hardware arrives.

Features

- Scheduling Options
- On Demand Sync
- Sync to:
 - Local Drive
 - External Drive
 - Network Drive
- Administrative Alerts
- Multi-level Redundancy

Replicate Data



Destroyed BDR Unit



Reimage BDR Unit
from the Colo



Ship Next Day Air
to Specified Location



Virtualize Failed Server
on BDR Unit



Infotech Ltd

www.zenithinfotech.com